

IBM_PrepKing_000-933_IBM Tivoli Netcool/OMNIBus V7.2 Implementation

Number: 000-933

Passing Score: 800

Time Limit: 120 min

File Version: 2011-06-06

Code: 000-933

Version:2011-06-06

Questions:120

温室小花... 中间件... 数据库
<http://www.evanjiang.net>

Exam A

QUESTION 1

Which three drivers come with a default installation of IBM Tivoli Netcool/OMNibus v7.2 on Windows platform? (Choose Three.)

- A. NetBEUI
- B. NetBIOS
- C. DecNET
- D. Token Ring
- E. Named Pipe
- F. Winsock TCP/IP

Answer: CEF

Section: (none)

QUESTION 2

A user on a remote machine receives an error and cannot connect to the ObjectServer with a client. How can connectivity from a UNIX client to the ObjectServer be verified?

- A. nco_ping <ip address>
- B. nco_ping <objectserver>
- C. nco_ping <ip address> <port>
- D. nco_ping -server <objectserver>

Answer: B

Section: (none)

QUESTION 3

The process control is configured on a system. All processes, except the probe, are PA Aware.

ActualTests.com

What is the best way to configure \$NCHOME/omnibus/etc/nco_pa.conf?

- A. nco_service mnibus
ServiceType = Master
ServiceStart = Auto
process rimary NONE
process ackup rimary
process igate rimary backup
process robe1 rimary
 - B. nco_service mnibus
ServiceType = Master
ServiceStart = Auto
process igate NONE
process rimary igate
- 2

- process ackup igate
- process robe1 rimary backup
- C. nco_service mnibus
ServiceType = Master
ServiceStart = Auto
process rimary NONE
process ackup rimary
process igate backup
process robe1 rimary
- D. nco_service mnibus
ServiceType = Master
ServiceStart = Auto
process rimary NONE
process ackup rimary
process robe1 rimary
process igate robe1

Answer: C

Section: (none)

QUESTION 4

A large service provider with one NOC at a central Data Center and several Business Silo's spread across the nation adding up to 60 native desktop clients. The customer does not want to maintain desktop Object Servers. What is the best solution architecture for this environment.

- A. Two high capacity servers running Object Servers that support event collection and support the NOC users
- B. A single low capacity server running an Object Server, all event collection and display is done from this server.
ActualTests.com
- C. A tiered architecture where one Object Server is collecting events and running automations and another Object Server to support the NOC users
- D. A tiered architecture with a single Object Server for event collection, and heavy use NOC users are using desktop object servers, all other users use the single Object Server

Answer: C

Section: (none)

QUESTION 5

Which statements are true about creating a tool with an external action? (Choose Three.)

- A. The users must have ISQL Write rights.
3
- B. The path must be the same for all users.
- C. The external action must be available to all users.
- D. You must enable journaling to make sure users are using the tool correctly.

- E. The users must have Super User permissions to execute the external action.
- F. You must make sure the platform tab is checked if the external tool is OS specific.

Answer: BCF

Section: (none)

QUESTION 6

A user connected with a native desktop to an Object Server running on a UNIX server is complaining about slow response time. What is the valid step to take in order to diagnose this problem?

- A. Runnco_patch to determine what patches have been applied
- B. Verify that the UNIX nice setting for theObjectServer is high enough
- C. Determine if the slow response time is isolated to that particular user
- D. From the client desktop, do Help --> On Version to determine revision level of desktop software

Answer: C

Section: (none)

QUESTION 7

Which rules file code segment properly adds an external rules file segment into the current rules file?

- A. Import "NC_RULES_HOME/include-snmptap/adtran-ADTRAN-ACTDAXL3-MIB.include.snmptap.rules
- B. Lookup "\$NC_RULES_HOME/include-snmptap/adtran-ADTRAN-ACTDAXL3-ActualTests.com-MIB.include.snmptap.rules" include
- C. "NC_RULES_HOME/include-snmptap/adtran-ADTRAN-ACTDAXL3-MIB.include.snmptap.rules
- D. #include "NC_RULES_HOME/include-snmptap/adtran-ADTRAN-ACTDAXL3-MIB.include.snmptap.rules

Answer: C

Section: (none)

QUESTION 8

Click the Exhibit button.

Consider the information given in the exhibit and the fact that you are logged in to DISP_01 using nco_sql. Which single command query could you use to determine if the gateway 4

A_TO_D_01_GATE is connected and what server the gateway is running on?

```
# Primary aggregation server
[AGG_P]
{
    Primary: server1 4102
}
# Backup aggregation server
[AGG_B]
{
    Primary: server2 4103
}
# Virtual aggregation server
[AGG_V]
{
    Primary: server1 4102
    Backup: server2 4103
}
# Display server number 1
[DISP_01]
{
    Primary: server3 4104
}
# Gateway from aggregation to display server number 1
[A_TO_D_01_GATE]
{
    Primary: server3 4107
}
}
```

ActualTests

ActualTests.com

- A. select Users from master.names where AppName='GATEWAY';
- B. select Gateway from master.names where AppName='GATEWAY';
- C. select HostName from catalog.connections where AppName='GATEWAY';

D. `selectServerName from catalog.connections where AppName='GATEWAY';`

Answer: C

Section: (none)

QUESTION 9

Which statement best describes the "AFTER IDUC DO " option in the ObjectServer gateway configuration files?

5

- A. It is used to configure the gateway to only process events after IDUC has expired.
- B. It is used to control the rate at which events are passed from the primary to the failover.
- C. It is used to specify a command that is run after an event has been processed by the gateway.
- D. It is used in conjunction with ObjectServer profiling, and will enable collection of gateway statistics.

Answer: C

Section: (none)

QUESTION 10

The ObjectServer ships with a set of predefined roles. Which statement is true about supplementing the SuperUser role?

- A. This role cannot be modified.
- B. `nco_sql` can be used to modify this role.
- C. The user should run `nco_config` in order to modify this role.
- D. The SuperUser role usually needs to be modified to allow normal users restricted access to tables and views.

Answer: A

Section: (none)

QUESTION 11

Under a default IBM Tivoli Netcool/OMNIBus v7.2 install on UNIX/Linux, which command can be used to start the Event List?

- A. `/opt/netcool/bin/nco`
- B. `/opt/netcool/bin/nco_event`
- C. `/opt/netcool/omnibus/bin/nco_elct`
ActualTests.com
- D. `/opt/netcool/omnibus/bin/nco_event`

Answer: D

Section: (none)

QUESTION 12

What type of trigger should you create in order to send AEN messages?

- A. Signal triggers
- B. Temporal triggers
- C. Database triggers
- D. Triggers are not required, a probe can initiate AEN messages 6

Answer: C

Section: (none)

QUESTION 13

How do you create a group in the ObjectServer?

- A. Configure group name, group ID and roles
- B. Configure user names, user ID and restriction filters
- C. Run the UNIX command `groupadd` and assign an ID, a name and users to it
- D. Run `$OMNIHOME/nco_sql` and insert: ObjectServer name, group name, user name and a unique identifier

Answer: A

Section: (none)

QUESTION 14

In an IBM Tivoli Netcool/OMNIBus v7.2 probe rules file, which statement will discard events where the ObjectServer Summary field starts with the word Test?

- A. `if (nmatch(@Summary,"^Test")) {discard}`
- B. `if (regmatch($Summary, "Test")) {discard}`
- C. `if (regmatch(@Summary, "^Test")) {discard}`
- D. `if (regmatch(@Summary, "$Test")) {discard}`

Answer: C

Section: (none)

QUESTION 15

ActualTests.com

Which statement is true about a Temporal Trigger?

- A. It is executed at a pre-defined frequency.
- B. It is always executed before Database and Signal Triggers.
- C. It is executed in response to changes detected with the ObjectServer.

D. It can be executed as either a Row-level trigger or Statement-level Trigger.

Answer: A

Section: (none)

QUESTION 16

Users are complaining about slow desktop performance. They report periods of time where their desktops appear to be locked followed by periods of reasonable response. These conditions

7

appear to repeat at consistent intervals. What is a possible explanation?

- A. Too many events resident in the Object Server
- B. Too many probes connected to the Object Server
- C. Too many Signal Triggers running at the same interval setting
- D. Too many Temporal Triggers running at the same interval setting

Answer: D

Section: (none)

QUESTION 17

Which two do you use to configure a probe to communicate with a particular ObjectServer? (Choose Two.)

- A. The -name property on the command line
- B. The -server property on the command line
- C. The Name property in the probe properties file
- D. The Server property in the probe properties file
- E. The Manager property in the probe properties file

Answer: BD

Section: (none)

QUESTION 18

In an IBM Tivoli Netcool/OMNIBus V7.2 probe rules file, what is the purpose of the registertarget function?

- A. Registers a secondObjectServer and forward the corresponding alerts
- B. Configures one or moreObjectServers, and the corresponding tables, to which you want to send ActualTests.com alerts
- C. Sets anObjectServer and associated Table as the ObjectServer and Table to which you want to send alerts

- D. Sets anObjectServer and associated Table as the default ObjectServer and Table to which you want to send alerts

Answer: B

Section: (none)

QUESTION 19

A probe is in a High Availability OMNibus Environment with the PollServer property set to a value other than 0. The probe is connected to a backup ObjectServer because failover occurred. Which statement is true about this probe?

8

- A. The probe periodically disconnects from the backupObjectServer and attempts to reconnect to the primary ObjectServer.
B. The probe periodically polls the primaryObjectServer using nco_ping, and if successful, attempts to reconnect to the primary ObjectServer.
C. The probe periodically listens for a Heartbeat from the primaryObjectServer and if received, attempts to reconnect to the primary ObjectServer.
D. The probe periodically pings the primaryObjectServer using an icmp ping, and if successful, attempts to reconnect to the primary ObjectServer.

Answer: A

Section: (none)

QUESTION 20

What does the Routing Table section in the nco_pa.conf file manage?

- A. Communication between PA and the system
B. Communication between PA and remote PAs
C. Communication between PA and theObjectServer
D. Communication between PA and monitored processes

Answer: B

Section: (none)

QUESTION 21

The ObjectServer running on a UNIX server is slow to respond to sql commands. The \$NCHOME/omnibus/log/NCOMS_trigger_stats.log1 file contains the following information:
Wed Jan 10 16:22:56 2008: Trigger Group 'default_triggers' Wed Jan 10 16:22:56 2008: Trigger time for 'deduplication': 0.000000s ActualTests.com
Wed Jan 10 16:22:56 2008: Trigger time for 'generic_clear': 0.233530s Wed Jan 10 16:22:56 2008: Trigger time for 'service_update': 0.000000s Wed Jan 10 16:22:56 2008: Trigger time for 'expire': 0.002040s Wed Jan 10 16:22:56 2008: Trigger time for 'delete_clears': 0.001756s Wed Jan 10 16:22:56 2008: Trigger time for 'clean_journal_table': 0.027385s Wed Jan 10 16:22:56 2008: Trigger time for 'service_insert': 0.000000s Wed Jan 10 16:22:56 2008:

Trigger time for 'service_reinsert': 0.000000s Wed Jan 10 16:22:56 2008: Trigger time for 'clean_details_table': 0.000243s Wed Jan 10 16:22:56 2008: Trigger time for 'state_change': 0.000000s Wed Jan 10 16:22:56 2008: Trigger time for 'new_row': 0.000000s Wed Jan 10 16:22:56 2008: Trigger time for 'deduplicate_details': 0.000000s Wed Jan 10 16:22:56 2008: Trigger Group 'custom_triggers' Wed Jan 10 16:22:56 2008: Trigger time for 'escalate_critical_alerts': 56.819832s Wed Jan 10 16:22:56 2008: Trigger time for 'event_notification': 5.233530s 9

Wed Jan 10 16:22:56 2008: Trigger time for lean_old_events': 0.000000s Wed Jan 10 16:22:56 2008: Trigger time for ?lean_old_events': 0.000000s Wed Jan 10 16:22:56 2007: Time for all triggers in report period (60s): 62.316276s What is the most likely cause of this problem?

- A. The default_triggers trigger group should be enabled
- B. The excessive execution of SQL commands from client connections
- C. The frequency for temporal trigger clean_old_events is causing the trigger to run too frequently
- D. The database trigger escalate_critical_alerts is defined as a row-level trigger instead of a statement-level trigger

Answer: D

Section: (none)

QUESTION 22

Which system file needs to be modified to create a log file that must be configured for the Syslog probe to read?

- A. /etc/init.d/nco
- B. /etc/syslog.conf
- C. /var/adm/ncolog.log
- D. \$NCHOME/omnibus/probes/solaris2/syslog.props

Answer: B

Section: (none)

QUESTION 23

Click the Exhibit button.

An engineer starts the Syslog probe to test the IBM Tivoli Netcool/OMNIBus v7.2 configuration.

ActualTests.com

The probe dies immediately, so the engineer checks the log file and views the output in the exhibit.

What is a possible cause of the problem?

```
08/13/06 12:02:41: Error: ct_connect(): network packet layer: internal net library error: Net-Lib
protocol driver call to connect two endpoints failed
OS Error: Socket connect failed - errno 146 Connection refused
08/13/06 12:02:41: Error: ct_connect(): directory service layer: internal directory control layer error:
Requested server name not found.
08/13/06 12:02:41: Error: Failed to make a connection to server 'SCOMS'.
08/13/06 12:02:41: Error: Failed to connect to all required ObjectServers.
08/13/06 12:02:41: Error: Failed to read rules - aborting
```

ActualTests

- A. There is a syntax error in the probe's rules file.
- B. Another Syslog probe is already running on the machine.
- C. Another Syslog probe is already connected to the ObjectServer.
- D. The interfaces.<ARCH> file has not been configured with the correct connection information.

10

Answer: D

Section: (none)

QUESTION 24

If a probe patch needs to be removed or backed out, the following command can be used:
\$NCHOME/omnibus/install/nco_patch -remove <patch_ID> How can you determine the patch_ID needed by the nco_patch utility?

- A. You run the command \$SOMNIHOME/install/nco_patch -print=short.
- B. You look up the name of the patch in the .pdf documentation for the probe.
- C. The name of the patch_ID is the same as the name of the probe executable.
- D. You run the command \$SOMNIHOME/bin/nco_id for a list of installed packages.

Answer: A

Section: (none)

QUESTION 25

Which three sub components can be customized using Menus tab in IBM Tivoli Netcool/OMNIBus v7.2 Administrator? (Choose Three.)

- A. The View in the Event List
- B. The menus in the Event List
- C. The menus in the Conductor
- D. The menus in the Filter Builder
- E. The menus in the View Builder
- F. The menus in the Sub Event List

Answer: BCF

Section: (none)

Explanation/Reference:

ActualTests.com

QUESTION 26

A netcool UNIX group with id 9999 has been created. Which of the following will make the UNIX user netcool, part of that group?

- A. usermod -g netcool netcool
- B. groupmod -u netcool netcool
- C. changeuser -addgroup netcool netcool
- D. edit the /etc/new.groups file, add netcool to the netcool:9999 line

Answer: A

Section: (none)

Explanation/Reference:

11

QUESTION 27

Click for exhibit

OMNibus v7.2 has been installed. A user then runs the nco_objserv command which results in the errors displayed in the exhibit. After successfully installing OMNibus, which of the following steps was missed:

```
nickvm:/opt/netcool/omnibus/bin # ./nco_objserv

Netcool/OMNibus Object Server - Version 7.2

(C) Copyright IBM Corp. 1994, 2007

01/09/08 18:17:07: Warning: W-ETC-004-066: Failed to
load properties file
/opt/netcool/omnibus/etc/NCOMS.props: No such file or
directory
Server 'NCOMS' initialised - entering RUN state.
nickvm:/opt/netcool/omnibus/bin #
```

ActualTests

- A. \$OMNIHOME was not set
- B. The user did not runnco_dbinit
- C. The user did not runnco_igen
- D. The UNIX/Linux server was not rebooted for the changes to take effect

Answer: B

Section: (none)

QUESTION 28

ActualTests.com

A customer is unable to communicate with a remote ObjectServer. The customer is able to ping the box, but unable to open an Event List. The customer entry in the omni.dat is:

[NCOMS]

{

Primary: Server_A 4100

}

Both the port and host name are correct and the customer is able to access nco_config. What is a possible solution?

- A. Add a backup entry below the Primary
 - B. Replace the host name with the IP address
 - C. Verify that port 4100 is not in use on your local machine
 - D. Replace the host name with the host name of your local machine
- 12

Answer: B

Section: (none)

QUESTION 29

Object Server fields Location and ContactNum are currently used to store the location and contact details for each event. The user would like to see from which location the event generated and who to contact for any Severity = CRITICAL alarms. What should be done?

- A. Using View Builder, Enable the check box for Location andContactNum fields and in Display Columns section.
- B. Using View Editor, Enable the check box for Location andContactNum fields and in Display Columns section.
- C. Using View Builder, Select the Location andContactNum fields and add them to the Display Columns section.
- D. Using View Builder, Select the Location andContactNum fields from Available Columns list and drag and drop to the Display Columns section.

Answer: C

Section: (none)

QUESTION 30

The AEN Client is installed on a remote host from the ObjectServer, the user is unable to configure the client to connect to the ObjectServer. What is the most likely reason for this?

- A. The ObjectServer has not been configured to generate AEN messages
- B. The ObjectServer is not listed in the interfaces file on the AEN Client host
- C. The necessaryObjectServer permissions are not available to configure the client

D. The ObjectServer is not running and should be started to configure the AEN client ActualTests.com

Answer: B

Section: (none)

QUESTION 31

Process Control is configured on a UNIX/Linux machine to manage both OMNibus and non-OMNibus processes, and startup scripts are installed. However, on starting the host system it is observed that some of the non-OMNibus processes have not started. What could be two reasons for this? (Choose Two).

- A. Process Control can only manage OMNibus processes
- B. The non-OMNibus processes have not been installed in the default Netcool directory
- C. Dependencies have been placed on non-OMNibus processes but these processes are not PA Aware
- D. Environment variables referenced in the non-OMNibus processes have not been defined when the Process Agent is started
- E. The non-OMNibus processes may fail if started by the root user but Process Control starts all managed processes as the root user

Answer: CD

Section: (none)

QUESTION 32

What is the correct syntax for placing a comment within a trigger?

- A. *
- B. #
- C. <!--
- D. --

Answer: D

Section: (none)

QUESTION 33

Your users are complaining that they have not recently seen any events in the collection server 'COL_P' from a particular device with the Node 192.168.13.128. How can you check to see what events have come in from that IP address, and the time the most recent event came in?

- A. Select min(LastOccurrence) from alerts.status where Node='192.168.13.128'
- B. Select a.LastOccurrence, b.Node from alerts.status a, alerts.details b where Node = '192.168.13.128'

- C. Select to_char>LastOccurrence) from alerts.status where Node='192.168.13.128' order by LastOccurrence
ActualTests.com
- D. desc
- E. Select to_char>LastOccurrence) from alerts.details where Node='192.168.13.128' order by LastOccurrence desc

Answer: C

Section: (none)

QUESTION 34

The ObjectServer Granularity time is set to 45 seconds, however the information logged to the file \$NCHOME/omnibus/log/NCOMS_trigger_stats.log1 is logged in 60 second increments. How could the logging frequency be changed?

14

- A. Change the ObjectServer property Auto.StatsInterval
- B. Change the ObjectServer property TriggerStatsInterval
- C. Change the Frequency column in the catalog_trigger_stats table
- D. Change the PeriodTime column in the catalog_trigger_stats table

Answer: A

Section: (none)

QUESTION 35

A common user requirement is to provide a "north-bound" interface from the Netcool ObjectServer to a third-party Network Management System. This is used to pass event data from the Netcool ObjectServer to the third-party system. Which component of Netcool can be used to satisfy this requirement?

- A. TL1 TSM
- B. Socket probe
- C. SNMP gateway
- D. Generic log file probe

Answer: C

Section: (none)

QUESTION 36

You are installing a High Availability OMNIBus Environment. You want to ensure events are passed to the backup ObjectServer in a timely fashion. Which property needs to be modified in the gateway.props file to adjust the frequency with which events are passed?

- A. Gate.ObjectServerA.SAFRate

- B. Gate.ObjectServerA.EventTimer
ActualTests.com
- C. Gate.ObjectServerA.IducFlushRate
- D. Gate.ObjectServerA.FailbackEnabled

Answer: C

Section: (none)

QUESTION 37

What are three indications that a field has been successfully added to the alerts.status table?
(Choose Three.)

- A. It shows up in View Builder.
- B. It appears in the Filter Builder.
15
- C. It can be used in the probe's rules file.
- D. The ObjectServer requests to be rebooted.
- E. It is automatically added in all custom views.
- F. There is a New Field event in theObjectServer indicating a new field has been added.

Answer: ABC

Section: (none)

QUESTION 38

How is a trigger created or replaced if it already exist?

- A. DROP OR REPLACE 'trigger_name';
- B. CREATE OR RENAME TRIGGER 'trigger_name';
- C. CREATE OR REPLACE TRIGGER 'trigger_name';
- D. CREATE OR RECREATE TRIGGER 'trigger_name';

Answer: C

Section: (none)

QUESTION 39

Your customer wants to install the IBM Tivoli Netcool Suite on AIX. What is the default installation location of Netcool Omnibus on AIX?

- A. /usr/netcool
- B. /opt/netcool
- C. /usr/omnibus
- D. /root/omnibus

Answer: A

Section: (none)

Explanation/Reference:

ActualTests.com

QUESTION 40

Click the Exhibit button.

Given the information provided in the exhibit, which entry would you put in nco_routing section of the nco_pa.conf on the host 'server1' to allow PA on server1 to communicate with PA on server2 and server3?

16

温室小花... 中间件... 数据库
<http://www.evanjiang.net>

```
# Primary aggregation server
[AGG_P]
{
    Primary: server1 4102
}
# PA for server1
[SERVER1_PA]
{
    Primary: server1 4200
}
# PA for server2
[SERVER2_PA]
{
    Primary: server2 4100
}
# PA for server3
[SERVER3_PA]
{
    Primary: server3 4200
}
ActualTests
```

ActualTests.com

- A. 'SERVER1_PA'
'SERVER2_PA'
'SERVER3_PA'
- B. host 'server1' 'SERVER1_PA'
host 'server2' 'SERVER2_PA'
17
host 'server3' 'SERVER3_PA'
- C. host 'server1' 'SERVER1_PA'

```
host 'server1' 'SERVER2_PA'  
host 'server1' 'SERVER3_PA'  
D. host 'server1' 'SERVER1_PA'  
host 'server2' 'SERVER1_PA'  
host 'server3' 'SERVER1_PA'
```

Answer: B

Section: (none)

QUESTION 41

How do you change the default installation location for IBM Tivoli Netcool/OMNIBus v7.2?

- A. You use the command line override to the Common Installer.
- B. You check the Verbose Install option in the Common Installer GUI.
- C. You extract the .jar files and move the contents to the desired location.
- D. The directory cannot be changed during installation and must be modified afterwards.

Answer: A

Section: (none)

QUESTION 42

IBM Tivoli Netcool/OMNIBus v7.2 has been installed and is running on a UNIX server. Most users in the environment are working on Windows machines. They need to connect to the ObjectServer using the Windows version of the Event List.

How do you install the native desktop client (Event List) on a Windows machine?

- A. Download the Windows version of the Desktop client package and install it on the Windows ActualTests.com machine
- B. Download the Windows version of the OMNIBus install package; run the installer; select only the "Desktop" feature to install
- C. Download the Windows version of the OMNIBus install package; run the installer; select the Common configuration method (which by default installs only the Event List)
- D. Copy the Windows client installer file from the UNIX machine (desktop.msi, by default under
- E. \$NCHOME/omnibus/platform/win32) over to Windows machine and install it

Answer: B

Section: (none)

QUESTION 43

18

The design document states all of the OMNIBus components should be configured to run securely in the environment. Which three changes should be made to secure the environment?

(Choose Three)

- A. Configure the Probe properties `ipc.SSLEnable`, `ipcSSLPrivateKeyPassword`, `ipc.SSLCertificate`.
- B. Run `ObjectServer`, `ProxyServer` and `ProcessControl` in secure mode using secure command line argument.
- C. Use `usenco_crypt` to generate the encrypted password to be assigned to property `authPassword` in probes, gateways or proxy server.
- D. Configure `authUserName` and `authPassword` properties in probes, gateways or proxy server to securely connect to `ObjectServer`.
- E. Use `usenco_g_crypt` to generate the encrypted password to be assigned to property `uthPassword` in probes, gateways or proxy server.
- F. Use `usenco_pa_crypt` to generate the encrypted password to be assigned to property `uthPassword` in probes, gateways or proxy server.

Answer: BDE

Section: (none)

QUESTION 44

The syslog probe is configured to send events to a single `ObjectServer`. When the `ObjectServer` was down for maintenance, the probe was restarted. When the `ObjectServer` became available, the probe did not send events received during the maintenance period. What is the most likely cause of this problem?

- A. The probe property `AutoSAF` is not set in the probe properties file.
- B. The probe property `SAFFileName` is not set in the probe properties file.
- C. The probe property `StoreAndForward` is not set in the probe properties file.
ActualTests.com
- D. The probe property `RetryConnectionCount` is not set in the probe properties file.

Answer: A

Section: (none)

QUESTION 45

A customer needs to collect and perform analysis on a unprocessed event stream being collected by a probe in order to assist in creation of a new rules file. What action will assist the customer with this requirement?

- A. Setting the option `EventCaptureFile` to "1" in the probe properties file to provide a log file with event stream data
19
- B. Running the probe in debug mode and analyzing the probe log file for event insert and update actions to the `ObjectServer`
- C. Setting the options `RawCapture` and `RawCaptureFile` in the probe properties file to provide a log file with event stream data
- D. Setting the option `RawCaptureFile` in the probe properties file to provide a log file with event stream data (No other property changes are necessary.)

Answer: C

Section: (none)

QUESTION 46

Which two properties must be set to enable a bidirectional gateway to maintain two ObjectServers synchronized? (Choose Two.)

- A. Gate.MapFile
- B. Gate.Transfer.FailoverSyncRate
- C. Gate.Mapper.ForwardHistoricJournals
- D. Gate.ObjectServerB.TblReplicateDefFile
- E. Gate.ObjectServerA.RefreshCacheOnUpdate

Answer: AD

Section: (none)

QUESTION 47

When configuring the Uni-directional Gateway between a master ObjectServer and a Desktop ObjectServer, the gateway map file needs to be modified to populate the Desktop ObjectServer alerts.status field MasterSerial. What is the purpose of this action?

- A. To provide identification of which ObjectServer first received the event ActualTests.com
- B. To provide unique identification of the events in the master ObjectServer
- C. To ensure that when the ObjectServer is started, it functions as a Desktop ObjectServer
- D. To ensure that any connected client recognizes that the ObjectServer is functioning as a Desktop ObjectServer

Answer: B

Section: (none)

QUESTION 48

The ObjectServer gateway 'UNI_GATE' is used to transfer data to a display ObjectServer. You need to replicate menu entries in the table tools.menus from the aggregation server to the display server. Which two configuration files do you need to edit to have this table copied through the gateway? (Choose Two.)

20

- A. UNI_GATE.map
- B. UNI_GATE.conf
- C. UNI_GATE.props
- D. UNI_GATE.startup.cmd
- E. UNI_GATE.reader.tblrep.def

Answer: AE

Section: (none)

QUESTION 49

In an IBM Tivoli Netcool/OMNIBus v7.2 probe rules file, you want to execute different rules based on the \$Node value. What is the most efficient method to use to accomplish this?

- A. case(\$Node)
- B. switch(\$Node)
- C. if (match(\$Node,"text"))
- D. if (nmatch(\$Node,"text"))

Answer: B

Section: (none)

QUESTION 50

Which configuration actions must be performed in order for desktop client(ncs_event) failover to work? (Choose Two.)

- A. Create a Proxy Server
- B. Configure auni-directional gateway
- C. Create a primary and backupObjectServer
- D. Add a backup client entry to the primaryObjectServer entry in omni.dat or the server editor ActualTests.com
- E. Start the event list withncs_event server <primary ObjectServer>:<backup ObjectServer>

Answer: CD

Section: (none)

QUESTION 51

Using the configuration GUI, which actions are valid for modifying a roles table permissions? (Choose Three.)

- A. EDIT
- B. DROP
- C. MOVE
- 21
- D. AMEND
- E. DELETE
- F. SELECT

Answer: BEF

Section: (none)

QUESTION 52

Which three pieces of information are required to generate a working ObjectServer interfaces.<arch> file. (Choose Three.)

- A. A server hostname
- B. ObjectServer name
- C. ObjectServer password
- D. ObjectServer username
- E. A resolvable server hostname
- F. Port that theObjectServer should run on

Answer: BEF

Section: (none)

QUESTION 53

A bi-directional gateway is configured and started. After several minutes a review indicates that new/updated events appear to be properly moving from the primary ObjectServer to the failover ObjectServer. However, there are numerous old events in the primary ObjectServer that do not appear in the failover copy. What is a likely cause of this issue?

- A. The value for gateway propertyGate.Resync.Enable is set to FALSE.
- B. The value for gateway propertyGate.ObjectServerB.IducFlushRate is set too high.
- C. The Object Server password specified in gateway property Gate.ObjectServerB.Password is not encrypted correctly.
- D. The wrong Object Server user name is specified in the value for gateway property Gate.ObjectServerB.Username.

Answer: A

Section: (none)

QUESTION 54

What is the default value for the NCHOME environment variable for a Windows installation?

- A. C:\Program Files\netcool
22
- B. C:\Program Files\omnibus
- C. C:\Program Files\IBM\Tivoli\Netcool
- D. C:\Program Files\Micromuse\netcool

Answer: C

Section: (none)

QUESTION 55

On a windows platform the native client will not connect to the Object Server, what should be

checked first.

- A. Check that the Object Server is running
- B. Check the PATH statement is correct
- C. Check if thencdesktop service is running
- D. Check that the LD_LIBRARY_PATH environment variable is set correctly.

Answer: A

Section: (none)

QUESTION 56

What occurs when the BREAK command is used within a trigger?

- A. It stops the execution of a procedure.
- B. It ends the current loop and proceeds to the next statement.
- C. It executes the sequence until ELSEIF, ELSE, or END IF is reached.
- D. It exits and writes the value of an expression to a variable or parameter.

Answer: B

Section: (none)

Explanation/Reference:

ActualTests.com

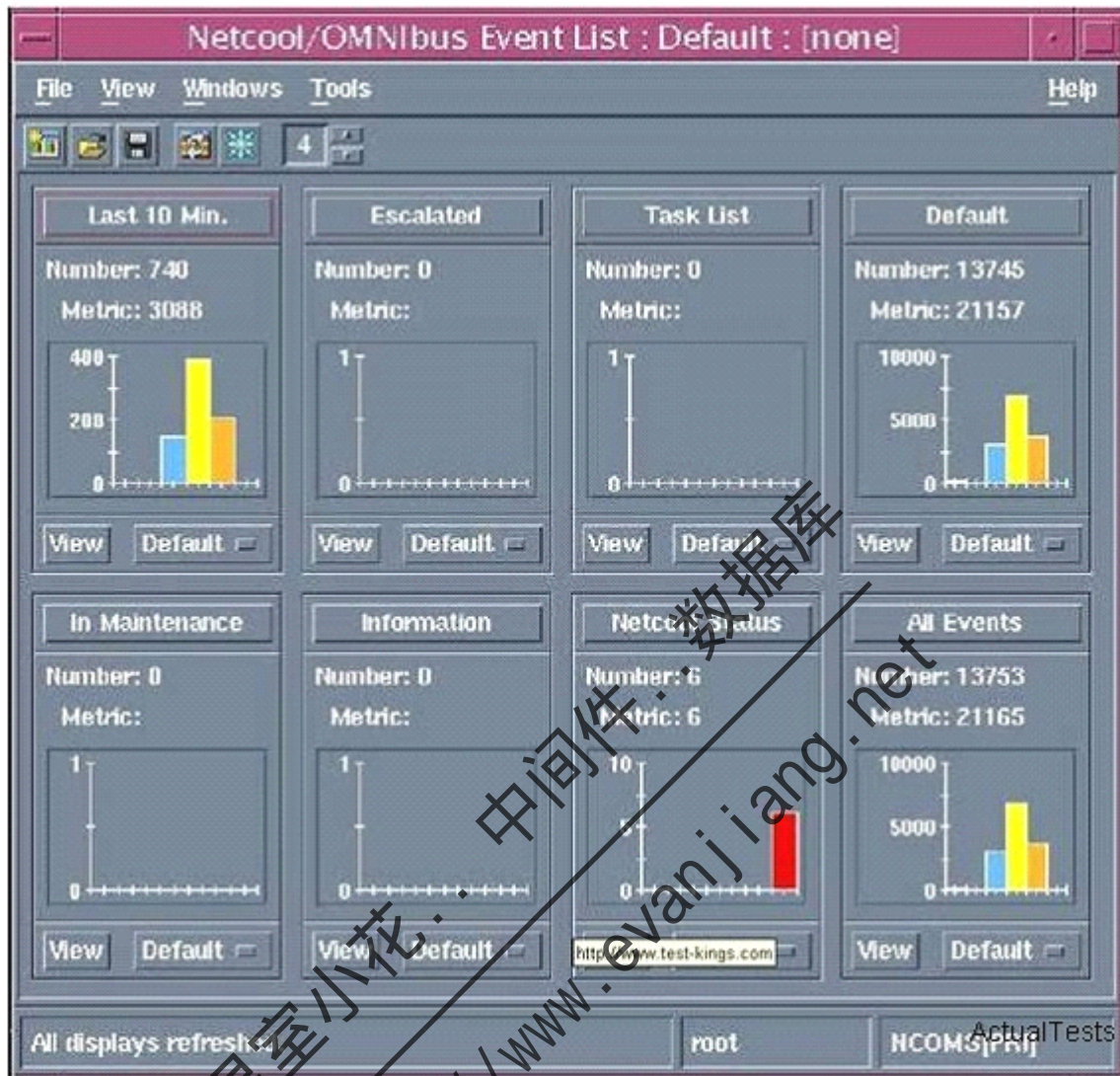
QUESTION 57

Click the Exhibit button.

Users are complaining about slow desktop performance. Most of the users are experiencing the same problem. The exhibit shows a view of a client desktop. Based on the information available in the exhibit, what is the most likely reason for this condition?

23

温室小花... 数据库
http://www.evanjiang.net



- A. There are too many filters defined for this user.
- B. The filter criteria defined for the users is overly complex.
- C. There are too many resident events in theObjectServer.
- D. There are too many users connected to thisObjectServer.

Answer: C

Section: (none)

Explanation/Reference:

ActualTests.com

QUESTION 58

Probe patches for Windows are delivered with which file extension?

- A. .gz
- B. .zip

- C. .tar.Z
- D. .tar.gz

Answer: B

Section: (none)

Explanation/Reference:

24

QUESTION 59

What does the following command do in the SQL portion of a tool? update alerts.status set Grade = \$prompt.Num where Serial = @Serial

- A. It sets the Grade field to the Serial number.
- B. It sets the Grade field to a user input value.
- C. It sets the Grade field only if the user defined value matches the Serial.
- D. It sets the Grade field to a list of values associated with the Serial number.

Answer: B

Section: (none)

QUESTION 60

Which two configuration modes are used to run an Oracle gateway? (Choose Two.)

- A. Audit
- B. Query
- C. Archive
- D. Reporter
- E. Historical

Answer: AD

Section: (none)

QUESTION 61

What are the restrictions on group names?

- A. No spaces are allowed in group names.
ActualTests.com
- B. There are no restrictions in names or name length.
- C. They cannot exceed 64 characters in length, including spaces.
- D. Groups names must start with an uppercase letter and not end in a number.

Answer: C

Section: (none)

QUESTION 62

When configuring Desktop ObjectServer architecture, one ObjectServer needs to be designated as the master. How is this achieved?

- A. Edit the masterObjectServer properties file to set MasterServer property = TRUE
- B. Usenco_xigen to add each Desktop ObjectServer entry to the master ObjectServer 25
- C. Ensure that the DesktopObjectServer master.national table has details of the master ObjectServer
- D. Edit each DesktopObjectServer properties file to set MasterServer property = <master ObjectServer Name>

Answer: C

Section: (none)

QUESTION 63

There is an ObjectServer (NCOMS) running under Process Control (NCO_PA) and the user would like to shut down the ObjectServer. What is the correct command to do this?

- A. nco_sql -server NCOMS
- B. nco_pa_shutdown -server NCOMS
- C. nco_pa_process -stop <pa_process_name>
- D. nco_pa_stop -process <pa_process_name>

Answer: D

Section: (none)

QUESTION 64

What is used by OMNibus to prevent users from seeing certain events?

- A. An automation to delete those events
- B. A View filter to filter out the those events
- C. A Restriction filter to filter out those events
- D. A Skip filter to allow users to skip those events

Answer: C

Section: (none)

Explanation/Reference:

ActualTests.com

QUESTION 65

Your UNIX username is John and your UNIX group is ncoadmin. The ObjectServer users netcool and gateway are configured. Which command is used to find out the processes running under PA server SERVER1_PA?

- A. nco_pa_status -name SERVER1_PA
 - B. nco_pa_status -server server1 -user netcool
 - C. nco_pa_status -server SERVER1_PA -user john
 - D. nco_pa_status -server SERVER1_PA -user netcool
- 26

Answer: C

Section: (none)

QUESTION 66

The customer needs to manage a nationwide network. To minimize network traffic across WAN links, Collection ObjectServers will be deployed toward the edges of the networks at regional data centers. Aggregation and Display ObjectServers will be located in a central location. Bi-directional gateways, running on the collection server, connect the collection and aggregation ObjectServers. There are firewalls between the regional data centers (collection ObjectServers) and the central location (aggregation ObjectServers). Which of the following ports must be opened in the firewall to enable alarm data to be transferred from the Collection ObjectServers to the Aggregation ObjectServers? (Choose Two.)

- A. The port on which the displayObjectServer is running.
- B. The port on which the collectionObjectServer is running.
- C. The IDUC port that the aggregation ObjectServer is using.
- D. The port on which the aggregationObjectServer is running.
- E. SNMP port so that the SNMP gateway can forward events as traps.

Answer: CD

Section: (none)

QUESTION 67

What happens when the No Modify option is selected during the field creation process?

- A. The field can only be modified by theObjectServer.
 - B. Users are not allowed to modify the data in the field.
 - C. Probes are not allowed to modify the data in the field.
 - D. A set value must be in the field before it can be deployed.
- ActualTests.com

Answer: B

Section: (none)

QUESTION 68

Which statement is valid about arrays when used in an IBM Tivoli Netcool/OMNibus V7.2 probe rules file?

- A. Arrays are one dimensional.
 - B. Arrays are defined using the syntax: Array =Node_Arr.
 - C. Elements are assigned to an array using:Node_Array(\$Node) = "abcd".
 - D. Array elements values are lost when the probe is forced to re-read the rules file using "kill - HUPpid".
- 27

Answer: A

Section: (none)

QUESTION 69

What is used to create menus for the Event List?

- A. The View Builder from the Event List
- B. The OMNIBus Administrator GUI <nco_config>
- C. The Menu Builder from the Main Event List window
- D. The Configuration button in IBM Tivoli Netcool/OMNIBus v7.2 (OMNIBus) Conductor

Answer: B

Section: (none)

QUESTION 70

Which command checks the probe rules file for errors in a UNIX/Linux environment?

- A. \$NCHOME/omnibus/bin/nco_syntax
- B. \$NCHOME/omnibus/contrib/nco_rules
- C. \$NCHOME/omnibus/utlis/rules_syntax
- D. \$NCHOME/omnibus/probes/nco_p_syntax

Answer: D

Section: (none)

QUESTION 71

When a client connects to an ObjectServer, it checks for the presence of the master.national table. What is the purpose of this action if the master.national table is detected?
ActualTests.com

- A. The client is aware that the DisplayObjectServer is operating in Backup mode.
- B. The client is aware of all DisplayObjectServers connected to the master ObjectServer.
- C. The client is aware that theObjectServer is a Desktop ObjectServer and enters Dual-Write mode.
- D. The client is aware that theObjectServer is a Desktop ObjectServer and enters Dual Server Desktop mode.

Answer: D

Section: (none)

QUESTION 72

28

Using the Netcool SNMP (MTTrapd) Probe, which rules file code segments will set the value of the ObjectServer AlertGroup field based on the specific trap number of a received SNMP trap?

- A. switch(\$specific-trap)
- ```
{
 case "1":
 @AlertGroup = "Link Status"
 case "2":
 @AlertGroup = "Card Status"
 default:
 @AlertGroup = "Device Status"
}
```
- B. switch(\$specific-trap)
- ```
{
  case "1":
    $AlertGroup = "Link Status"
  case "2":
    $AlertGroup = "Card Status"
  default:
    $AlertGroup = "Device Status"
}
```
- C. lookup(\$specific-trap)
- ```
{
 case "1":
 $AlertGroup = "Link Status"
 case "2":
 $AlertGroup = "Card Status"
 default:
 $AlertGroup = "Device Status"
 ActualTests.com
}
```
- D. lookup(\$specific-trap)
- ```
{
  case "1":
    @AlertGroup = "Link Status"
  case "2":
    @AlertGroup = "Card Status"
  default:
    @AlertGroup = "Device Status"
}
```

Answer: A

Section: (none)

Explanation/Reference:

29

QUESTION 73

Desktop ObjectServers are created with an additional table, master.national. Which fields does it contain?

- A. Identifier,ServerSerial, DualWrite
- B. KeyField, MasterServer, DualWrite
- C. KeyField, ServerSerial, DualDesktop
- D. Identifier,MasterServer, ServerSerial

Answer: B

Section: (none)

QUESTION 74

What is the correct mapping for the MasterSerial column of a display ObjectServer in the unidirectional gateway (gateway from an aggregation server to a dual server desktop (DSD))?

- A. 'MasterSerial'='AGG_V' ON INSERT ONLY
- B. 'MasterSerial'='@Serial' ON INSERT ONLY
- C. 'MasterSerial'='@ServerSerial' ON INSERT ONLY
- D. 'MasterSerial'='@MasterSerial' ON INSERT ONLY

Answer: B

Section: (none)

QUESTION 75

Which syntax is used to determine which options are available for the INSTALL utility?

- A. ./INSTALL -info
ActualTests.com
- B. ./INSTALL -help
- C. ./INSTALL rops./INSTALL ?rops
- D. ./INSTALL -options

Answer: B

Section: (none)

QUESTION 76

Which function does the Dynamic Choice prompt perform?

- A. Provides choices, based on the event(s) selected
- B. Provides random choices to be available to the user
- C. Provides the maximum number of choices to the user

30

31

D. Provides choices populated by an Oracle database query

Answer: A

Section: (none)

QUESTION 77

Which three actions must be taken for the nco_pa_status, nco_pa_start, and nco_pa_stop commands to work on a UNIX/Linux system? (Choose Three.)

- A. Add the UNIX user to thencoadmin group
- B. Make sure that NCO_PA has write access to /var/adm
- C. Run \$NCHOME/omnibus/bin/nco_pa_status Server NCO_PA
- D. Make sure it can connect to the Security Manager to authenticate users
- E. Make sure nco_pa can use the operating system to authenticate users
- F. Make sure the users in thencoadmin group can be authenticated by the system

Answer: AEF

Section: (none)

QUESTION 78

Without access to a GUI display, which command is used to read the omni.dat file and create the interfaces file?

- A. nco_igen
- B. nco_xigen
- C. nco_config
- D. nco_xprops

Answer: A

Section: (none)

Explanation/Reference:

ActualTests.com

QUESTION 79

A user has created a new view. What file name extension should be used while saving this new view?

- A. .elc
- B. .elf
- C. .elv
- D. Views cannot be saved, only filters and event list configuration should be saved.

Answer: C

Section: (none)

Explanation/Reference:

31

QUESTION 80

Which command creates an ObjectServer named NCOMS on a Windows machine?

- A. %NCHOME%\omnibus\bin\inco_dbinit -name NCOMS
- B. %NCHOME%\omnibus\bin\inco_dbinit -server NCOMS
- C. %NCHOME%\omnibus\bin\inco_new_server -name NCOMS
- D. %NCHOME%\omnibus\bin\inco_new_server -server NCOMS

Answer: B

Section: (none)

QUESTION 81

Which argument can you use to configure a probe to communicate with a particular ObjectServer using the command line?

- A. -name
- B. -agent
- C. -server
- D. -manager

Answer: C

Section: (none)

QUESTION 82

The AEN Client is configured to retain all messages, subject to the maximum number of messages not being exceeded, however, whenever the user logs into the AEN Client, there are no ActualTests.com messages. What could be the reason for this?

- A. The AEN Client only maintains a record of events for the current session
- B. The user needs to create an archive in order to store expired messages
- C. The AEN Client is not configured to maintain details of expired messages
- D. While the user was logged out, the messages in the ObjectServer expired

Answer: C

Section: (none)

QUESTION 83

In an IBM Tivoli Netcool/OMNIBus v7.2 probe rules file, which two statements will force the ObjectServer AlertGroup field to be Updated on De-duplication? (Choose Two.)

32

- A. update(@AlertGroup)
- B. deduplicate(@AlertGroup)
- C. update(@AlertGroup, TRUE)
- D. update(@AlertGroup, 1, TRUE)
- E. reinsert(@AlertGroup, TRUE, 1)

Answer: AC

Section: (none)

QUESTION 84

Users connected with native desktops to an ObjectServer running on a UNIX server are complaining about slow response times. You determine that the ObjectServer is slow to respond due to a high number of rows in the alerts.details table. What is a valid step to take in order to permanently reduce the number of records in alerts.details?

- A. Enable theclean_details trigger
- B. Edit the probe rules files, and comment out any lines that contain details(\$*)
- C. Delete the records from the alerts.details table via nco_sql with the command Delete from alerts.details
- D. Delete the records from the alerts.journal table via nco_sql with the command Delete from alerts.journal

Answer: B

Section: (none)

QUESTION 85

A customer running a secure IBM Tivoli Netcool/OMNIBus v7.2 server is about to implement a Remedy HelpDesk Gateway. What do you need to do to ensure the Gateway authenticated ActualTests.com properly?

- A. No additional measures need to be taken.
- B. You execute the RemedyHelpDesk Gateway binary with -authenticate secure.
- C. You update the configuration file with the ObjectServer username and password.
- D. You execute the RemedyHelpDesk Gateway binary with -user <user> -password <password>.

Answer: C

Section: (none)

QUESTION 86

What three actions should be performed in an OMNIBus system in order to send AEN messages? (Choose Three)

34

33

- A. Messaging triggers need to be created
- B. The ObjectServer AEN Service needs to be started
- C. Restriction Filters need to be defined to highlight AEN events
- D. OMNibus users need to be created in order to receive notifications
- E. Probe rules files need to be modified to populate anObjectServer Flag field
- F. Channels need to be created defining which tables and fields are used for notifications

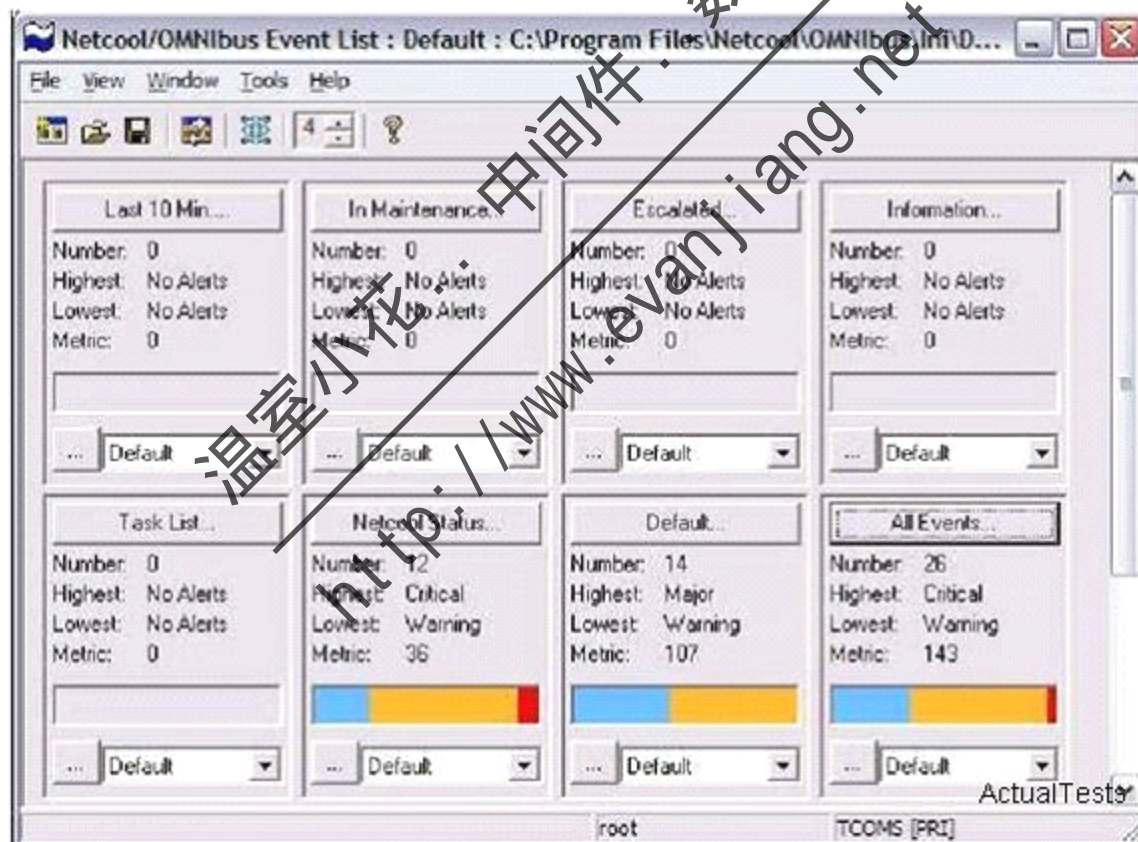
Answer: AEF

Section: (none)

QUESTION 87

Click the Exhibit button.

What do the monitor boxes in the Event List window represent?



ActualTests.com

- A. Filters
- B. Views
- C. Entities

35

D. Network elements

Answer: A

Section: (none)

QUESTION 88

How is a trigger group disabled from the command line (with nco_sql or isql.exe not the GUI)?

34

- A. Alter trigger group <groupname> set enabled=1;
- B. Alter trigger group <groupname> set enabled=false;
- C. Alter trigger group <groupname> set enabled False;
- D. Alter trigger table Set enabled=1 where groupname='group';

Answer: C

Section: (none)

QUESTION 89

What table would be used to observe Object Server performance?

- A. master.profile
- B. server.profile
- C. master.stats
- D. statistics.profile

Answer: C

Section: (none)

QUESTION 90

Which command is used to start the ObjectServer?

- A. nco_objserv -name <objectserver>
- B. nco_pa_start -name <objectserver>
- C. nco_objserv -server <objectserver>
- D. nco_pa_start -server <objectserver>

Answer: A

Section: (none)

Explanation/Reference:

ActualTests.com

QUESTION 91

What is the name of the X-Windows client software on UNIX/Linux?

- A. nco_event
- B. nco_client
- C. nco_display
- D. nco_objserv

Answer: A

Section: (none)

Explanation/Reference:

35

QUESTION 92

What is the proper syntax for calling procedure jinsert ?

- A. ./jinsert (old.Serial, \$user.userid, gettime(), *string)
- B. execjinsert (old.serial, %user.userid, getdate(), %string)
- C. executejinsert (old.Serial, %user.user_id, getdate(), 'string');
- D. begin executejinsert (old.Serial, %user.user_id, timestamp(), '\$string');

Answer: C

Section: (none)

QUESTION 93

The syslog probe did not failover to the Backup ObjectServer (NCOMS_B) when the Primary ObjectServer (NCOMS_P) was down for maintenance. What is the most likely cause of this problem?

- A. The probe property networkTimeout is set to 0
- B. NCOMS_B does not have failover automations enabled.
- C. The probe property retryConnectionCount is only set to 1.
- D. The probe property server is set to NCOMS_P, and the property serverBackup is set to NCOMS_B.

Answer: A

Section: (none)

QUESTION 94

Which two commands can be run from the Oracle Gateway Interaction Command Line Tool (nco_g_icmd)? (Choose Two.)

ActualTests.com

- A. SET
- B. UPDATE
- C. SELECT

- D. TRANSFER
- E. GET CONFIG

Answer: DE

Section: (none)

QUESTION 95

Assuming a default UNIX/Linux installation of IBM Tivoli Netcool/OMNIBus v7.2 with default probe settings, what is the path and filename of the log file for the Simnet probe?

36

- A. \$NCHOME/log/simnet.log
- B. \$NCHOME/log/probes/simnet.log
- C. \$NCHOME/omnibus/log/simnet.log
- D. \$NCHOME/omnibus/log/probes/simnet.log

Answer: C

Section: (none)

QUESTION 96

Failover was a success, however the events that were in the primary ObjectServer are not in the backup ObjectServer. What action should be taken to determine why the events are not present in the backup?

- A. Check gateway log file
- B. Verify PA is functioning
- C. Check the ObjectServer log files
- D. Verify the ObjectServer backup automation is active

Answer: A

Section: (none)

QUESTION 97

A bi-directional gateway is configured at a customer's site connected between a source ObjectServer and customer ObjectServer. The customer has observed that they are unable to manually refresh their event lists. What can be done to improve the situation.

- A. Set the Gateway property AllowManualRefresh = TRUE
- B. Set the sourceObjectServer property AllowGatewayRefresh = TRUE
- C. Set the Gateway property IDUCFlushRate to a value lower than the source ObjectServer ActualTests.com granularity
- D. Create a tool in the customer's ObjectServer that requests a refresh from the source ObjectServer

Answer: C

Section: (none)

QUESTION 98

In an IBM Tivoli Netcool/OMNIBus v7.2 probe rules file, the following table definition exists:
table dept_loc = "\$NC_RULES_HOME/includes/Dept_Loc.lookup" This table provides a lookup for both the department name and location name from the ObjectServer Node field.

37

Which statement correctly accesses the table to set the ObjectServer fields Department and Location?

- A. @Department, @Location =lookup(@Node, dept_loc)
- B. (@Department, @Location) =lookup(\$Node, dept_loc)
- C. {@Department, @Location} =lookup(\$Node, dept_loc)
- D. [@Department, @Location] =lookup(@Node, dept_loc)

Answer: D

Section: (none)

QUESTION 99

Which ObjectServer internal command writes information to a file?

- A. UPDATE
- B. WRITE INTO
- C. WRITE FILE
- D. COMMIT DATA

Answer: B

Section: (none)

QUESTION 100

An engineer is working directly on the UNIX server where IBM Tivoli Netcool/OMNIBus v7.2 is installed and running. The engineer tries to start the Event List, but receives the following error output:

Fatal Error: /opt/netcool/omnibus/platform/solaris2/bin/nco_event: can't open display What is a possible cause of this error?

ActualTests.com

- A. The remote machine is not runningOMNIBus.
- B. The engineer has not properly set the environment variable, DISPLAY.
- C. The user account the engineer is using does not have execute permission fornco_event.

- D. The machine is low on swap space and does not have enough resources to allocate for rendering the Event List.

Answer: B

Section: (none)

QUESTION 101

Which command may be run after the omni.dat file has been edited?

38

- A. \$NCHOME/install/create_objserv.pl
- B. \$NCHOME/omnibus/bin/nco_xigen
- C. \$NCHOME/bin/create_objserv.pl
- D. \$NCHOME/omnibus/bin/nco_objserv

Answer: B

Section: (none)

QUESTION 102

Which of the following will create a UNIX group called netcool with groupid 9999?

- A. groupadd -g 9999 netcool
- B. groupmod -g 9999 -n netcool
- C. edit the /etc/new.groups file, add the line netcool:9999
- D. edit the /etc/new.groups file, add the line netcool:9999 and restart the current session

Answer: A

Section: (none)

QUESTION 103

What configuration should be done for a user to authenticate using PAM? (Choose Two)

- A. Enable use PAM checkbox for the user to be authenticated externally.
 - B. Run \$NCHOME/omnibus/install/nco_install_ospam script to generate the configuration files.
 - C. Configure the Object Server to use PAM for authentication by setting propertySec.UsePam = TRUE.
 - D. Configure the Object Server to use PAM for authentication by setting propertySec.UsePam = TRUE and SecureMode = TRUE.
- ActualTests.com

Answer: AC

Section: (none)

QUESTION 104

What are two properties that need to be set to ensure failover functionality is enabled for the Netcool OMNibus Syslog probe? (Choose Two.)

- A. PeerPort
- B. PeerHost
- C. SlavePort
- D. SlaveHost
- E. MasterHost
- 39
- F. FailoverMode

Answer: AB

Section: (none)

QUESTION 105

Which command must be run to encrypt the password to ensure that the gateway authenticates properly in secure mode?

- A. \$NCHOME/omnibus/bin/nco_crypt
- B. \$NCHOME/omnibus/bin/nc_encrypt
- C. \$NCHOME/omnibus/bin/nco_g_crypt
- D. \$NCHOME/omnibus/bin/nco_pa_crypt

Answer: C

Section: (none)

QUESTION 106

Users are complaining about unusually slow desktop performance. An examination of the ObjectServer reveals that there are far too many events resident in the ObjectServer. What is a possible reason for this problem?

- A. A probe is operating in loop mode.
- B. ObjectServer profiling has been enabled.
- C. The defaultgeneric_clear Automation is running too often.
- D. A reaper type of Automation has not been configured to remove old event records.

Answer: D

Section: (none)

Explanation/Reference:

ActualTests.com

QUESTION 107

What is the correct syntax to define a virtual ObjectServer in the omni.dat file?

- A. [NCOMS]
{
Primarynetcool1 4100
Backupnetcool2 4100
}
- B. [VIRTUALNCOMS]
{
Primary:netcool1 4121
Backup:netcool2 4121
40
}
- C. [NCOMS]
{
Primary:netcool1 4100
}
[NCOMS]
{
Backup:netcool2 4100
}
- D. [VIRTUALNCOMS]
{
Primary:netcool1 4100
}
[VIRTUALNCOMS]
{
Backup:netcool2 4100
}

Answer: B

Section: (none)

QUESTION 108

Which command can be run on a UNIX server to verify that Process Agent is running and responding properly?

- A. /usr/local/bin/lsof
- B. \$OMNIHOME/bin/nco_pad
- C. /usr/bin/ps -ef | grep nco_pa
- D. \$NCHOME/omnibus/bin/nco_pa_status
ActualTests.com

Answer: D

Section: (none)

QUESTION 109

A government institution is interested in monitoring their Oracle-based internally developed

applications with the Tivoli Netcool suite. They only allow secure, encrypted communications between components of the solution. Which procedure should the institution implement to ensure secure communication is implemented?

- A. No additional procedures are necessary, as there is documentation stating encryption is supported by both applications.
41
- B. They only need to implement SSL between the internally developed Oracle applications and aNetcool probe since the default configuration communicates with the ObjectServer using encryption methods.
- C. They should set up network equipment to enforce routing policies between the internally developed Oracle applications and theNetcool since encryption is not supported with the Tivoli Netcool probe communication libraries.
- D. They should test communications between the internally developed Oracle applications and theNetcool suite by running a probe local to the host where the database is located and configuring the probe to run in secure mode and establish an SSL session with the ObjectServer.

Answer: D

Section: (none)

QUESTION 110

Within SQL shere clauses which type of clause should be ordered last to optimize performance?

- A. Date field matching
- B. Integer field matching
- C. Exact character matching
- D. Regular expression character matching

Answer: D

Section: (none)

QUESTION 111

You are installing a High Availability OMNIbus Environment using a Failover gateway called FAIL_GATE. If replication is required for data other than alerts data, which configuration files need to be modified?

ActualTests.com

- A. FAIL_GATE.startup.cmd, FAIL_GATE.props, FAIL_GATE.map
- B. FAIL_GATE.objservera.tblrep.def, FAIL_GATE.objserverb.tblrep.def
- C. FAIL_GATE.objservera.tblrep.def, FAIL_GATE.objserverb.tblrep.def, FAIL_GATE.map
- D. FAIL_GATE.objservera.tblrep.def, FAIL_GATE.objserverb.tblrep.def, FAIL_GATE.props

Answer: C

Section: (none)

QUESTION 112

What is the proper syntax for creating a backup of the object server when the target directory is called backup?

42

- A. Alter system backup "NCHOME/omnibus/backup/"
- B. Create system backup "NCHOME/omnibus/backup/ "
- C. Alter system start backup "NCHOME/omnibus/backup/"
- D. Alter system create backup "NCHOME/omnibus/backup/"

Answer: A

Section: (none)

QUESTION 113

Which nco_sql command can be used to list all of the gateways and other clients connected to an ObjectServer?

- A. Select Users frommaster.names;
- B. Select * fromcatalog.connections;
- C. Select Gateway frommaster.names;
- D. Select Connections fromcatalog.connections;

Answer: B

Section: (none)

QUESTION 114

Which roles should be assigned to a group of users to allow them access to the ObjectServer Event List in order to manage alarms?

- A. DesktopAdmin and ISQL
 - B. CatalogUser and AlertsUser
 - C. AutoAdmin and DatabaseAdmin
 - D. CatalogUser and DesktopAdmin
- ActualTests.com

Answer: B

Section: (none)

Explanation/Reference:

43

QUESTION 115

Which command must be run to encrypt the password to ensure that the gateway

authenticates properly in secure mode?

- A. \$NCHOME/omnibus/bin/nco_crypt
- B. \$NCHOME/omnibus/bin/nc_encrypt
- C. \$NCHOME/omnibus/bin/nco_g_crypt
- D. \$NCHOME/omnibus/bin/nco_pa_crypt

Answer: C

Section: (none)

QUESTION 116

A government institution is interested in monitoring their Oracle-based internally developed applications with the Tivoli Netcool suite. They only allow secure, encrypted communications between components of the solution. Which procedure should the institution implement to ensure secure communication is implemented?

- A. No additional procedures are necessary, as there is documentation stating encryption is supported by both applications.
41
- B. They only need to implement SSL between the internally developed Oracle applications and aNetcool probe since the default configuration communicates with the ObjectServer using encryption methods.
- C. They should set up network equipment to enforce routing policies between the internally developed Oracle applications and theNetcool since encryption is not supported with the Tivoli Netcool probe communication libraries.
- D. They should test communications between the internally developed Oracle applications and theNetcool suite by running a probe local to the host where the database is located and configuring the probe to run in secure mode and establish an SSL session with the ObjectServer.

Answer: D

Section: (none)

QUESTION 117

Within SQL shere clauses which type of clause should be ordered last to optimize performance?

- A. Date field matching
- B. Integer field matching
- C. Exact character matching
- D. Regular expression character matching

Answer: D

Section: (none)

QUESTION 118

What is the proper syntax for creating a backup of the object server when the target directory is called backup?

42

- A. Alter system backup "NCHOME/omnibus/backup/"
- B. Create system backup "NCHOME/omnibus/backup/ "
- C. Alter system start backup "NCHOME/omnibus/backup/"
- D. Alter system create backup "NCHOME/omnibus/backup/"

Answer: A

Section: (none)

QUESTION 119

Which command can be run on a UNIX server to verify that Process Agent is running and responding properly?

- A. /usr/local/bin/lsof
 - B. \$OMNIHOME/bin/nco_pad
 - C. /usr/bin/ps -ef | grep nco_pa
 - D. \$NCHOME/omnibus/bin/nco_pa_status
- ActualTests.com

Answer: D

Section: (none)

QUESTION 120

You are installing a High Availability OMNibus Environment using a Failover gateway called FAIL_GATE. If replication is required for data other than alerts data, which configuration files need to be modified?

ActualTests.com

- A. FAIL_GATE.startup.cmd, FAIL_GATE.props, FAIL_GATE.map
- B. FAIL_GATE.objservera.tblrep.def, FAIL_GATE.objserverb.tblrep.def
- C. FAIL_GATE.objservera.tblrep.def, FAIL_GATE.objserverb.tblrep.def, FAIL_GATE.map
- D. FAIL_GATE.objservera.tblrep.def, FAIL_GATE.objserverb.tblrep.def, FAIL_GATE.props

Answer: C

Section: (none)